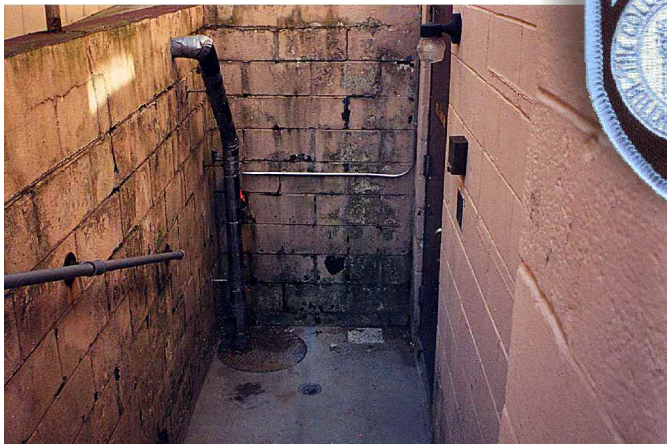


Local New Jersey Police Headquarters Solves Concrete & Safety Problems With DuraQuartz & ENESEAL



Matt Goldberg, of ENECON MidAtlantic, was called in by a local New Jersey Police Department to help them solve some very serious concrete and safety problems at their headquarters facility.

Matt recommended **ENECRETE DuraQuartz** and **ENESEAL HR** for this project and was given the green light to proceed.

The ENECON Engineering Team was brought in to provide a turn-key solution to the police department's problems. The project turned out perfectly.

These photos were submitted as evidence.

Case Closed!