

*New Jersey Grout
Manufacturer
Repairs & Protects
Containment Areas
with DuraQuartz,
FPS &
CHEMCLAD GP.*



This, the largest of the three areas was first power washed, then abraded with a floor sander; cracks were repaired with ENECRETE DuraQuartz and then coated with ENECLAD FPS.

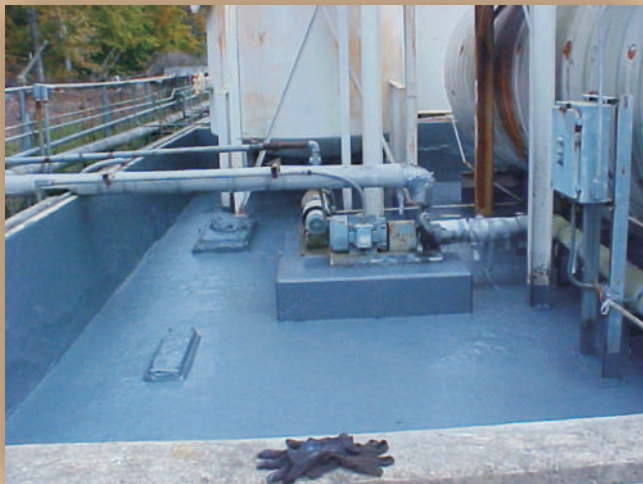
This \$31,000 project included three containment areas. The largest was asphalt and the other two were concrete. The asphalt had been previously coated with an epoxy paint which had deteriorated and

cracked. The concrete areas had never been coated.

The ENECON Mid Atlantic Engineering Team completed this entire project in just 4 days to the complete satisfaction of the plant engineers.



View from the opposite direction. Pallets containing drums of chemicals are stored here.



The second containment area was first power washed, cracks were repaired with DuraQuartz, P4C was applied over the concrete followed by 2 coats of CHEMCLAD GP.



The third containment area was repaired and protected as per the second containment area.